

Strength in Protection



Custom Built Crate for International Transportation of a Motorbike

Axis Packaging custom built a timber crate for the international transportation of a motorbike.



1. The custom built timber crate arrives in the packing yard.



2. The crate is forklifted off the vehicle bed.



3. The crate is designed for quick disassembly for easy loading of the motorbike.



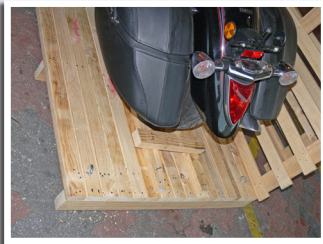
4. The motorbike is loaded into the crate.



5. The motorbike is secured to the crate floor.



6. Dunnage is used to prevent forward movement of the motorbike.



7. Dunnage is used to prevent rearward movement of the motorbike.



8. Blankets are used to protect the bike as it is strapped to the crate floor.



9. More protective blankets are placed over the motorbike.



10. The crate sides are reassembled and bags of packing are added for further protection.



11. The lid is attached then the crate is strengthened with metal strapping.



12. Ready for transportation!